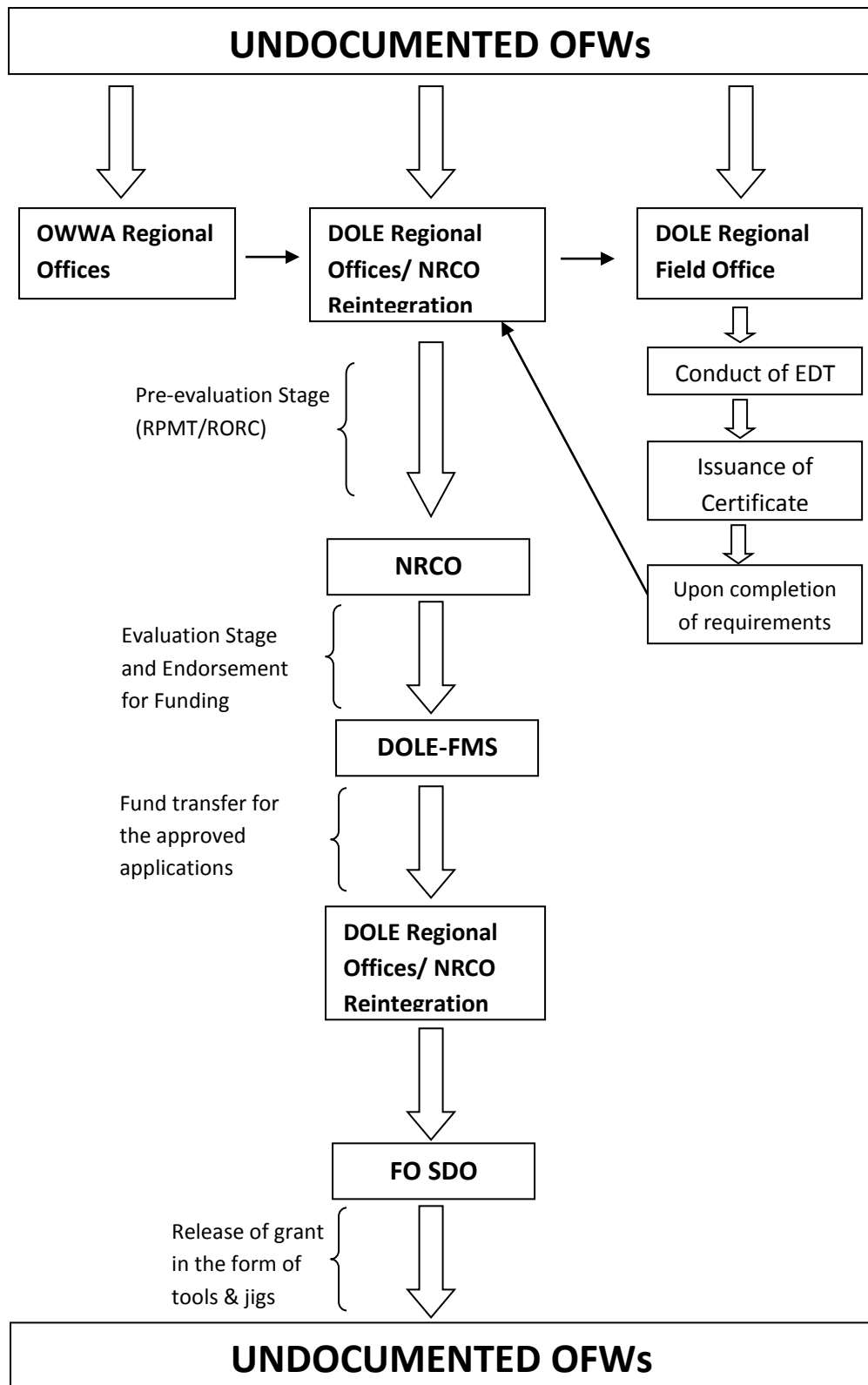
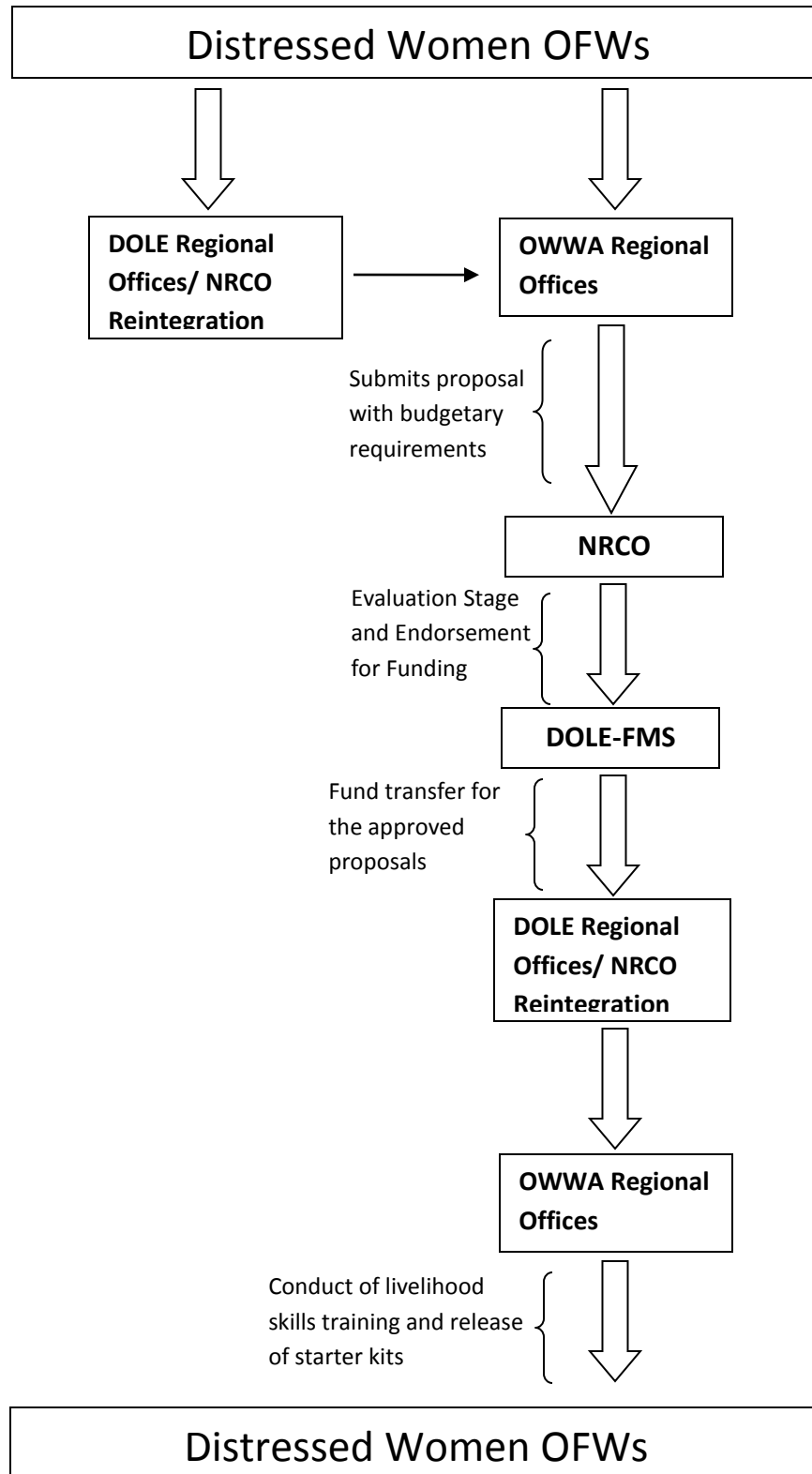


**PROCESS FLOW OF 10K LIVELIHOOD ASSISTANCE**



**PROCESS FLOW OF CONDUCT OF BALIK PINAY! BALIK HANAP BUHAY! IN REGIONS**



# Program Flowchart

**1** OFW applies either thru survey online at <http://tiny.cc/ofwletpasser.com>  
or at the  
a. DOLE-NRCO/DOLE Regional Offices (*if in the Philippines*)  
b. Philippine Overseas Labor Office (POLO) (*If outside the country*)

**2** NRCO/BLE generate report; initial profiling of OFW LET Passers

**3** NRCO prepares/ submits report to the Secretary of Labor

**6** DEPED prepares and sends letters to qualified OFW LET Passers  
  
DepEd updates their Division Superintendents

**5** DEPED conducts initial assessment based on profile of OFW LET Passers:  
-With teaching experience vs. W/O teaching experience  
-5-year rule

**4** DOLE endorses list of OFW LET Passers to DEPED

**7** Applicants submit requirements to DEPED; undergo qualification assessment based on DepEd Hiring Guidelines

**8** DEPED creates and prepares regular item in coordination with DBM

**9** Appointment for regular position to qualified OFWs